

Why decussate? - Topological constraints on 3D wiring

Troy Shinbrot* and Wise Young†
Rutgers University

Piscataway, NJ 08854

* Dept. of Biomedical Engineering
shinbrot@soemail.rutgers.edu

† Dept. of Cell Biology & Neuroscience

Abstract

Many vertebrate motor and sensory systems “decussate,” or cross the midline to the opposite side of the body. The successful crossing of millions of axons during development requires a complex of tightly controlled regulatory processes. Since these processes have evolved in many distinct systems and organisms, it seems reasonable to presume that decussation confers a significant functional advantage – yet if this is so, the nature of this advantage is not understood. In this article, we examine constraints imposed by *topology* on the ways that a three dimensional processor and environment can be wired together in a continuous, somatotopic, way. We show that as the number of wiring connections grows, decussated arrangements become *overwhelmingly more robust* against wiring errors than seemingly simpler same-sided wiring schemes. These results provide a predictive approach for understanding how 3D networks must be wired if they are to be robust, and therefore have implications both for future large scale computational networks and for complex biomedical devices.

Keywords: *Decussation, Neuronal Wiring, Topology, Dimensionality*

Introduction:

In the human, over half of motor and sensory tracts decussate: for example, the somatosensory, corticospinal, and corticorubral tracts all cross over to the opposite side of the body. Decussation predominantly occurs in tracts that mediate spatially organized data, while nonsomatotopic and phylogenetically older tracts do not decussate: examples include the olfactory, vestibulospinal and reticulospinal systems.

A large body of research into the precise anatomy of decussating neuronal pathways has been established, beginning with Hall in 1884¹⁻³, and noted as early as 1709 by Mistichelli⁴. More recently, developments in genomic and molecular techniques have allowed researchers to investigate detailed mechanisms by which these decussating pathways develop (e.g. references^{5, 6}). Some of the molecules responsible for guiding the decussation of neural pathways are evolutionarily quite primitive, for example netrin and its receptors UNC-5 and UNC-40 are present in *C. elegans*⁷.

From this body of developing knowledge, it has become clear that the mechanisms involved in successfully navigating the crossing of tracts that contain many millions of axons are extremely intricate and precise. Yet it remains unclear what practical or evolutionary function these difficult maneuvers serve. In this paper, we address the question of *why* the intricate developmental process of decussation has evolved in so many different systems and organisms. This question, seemingly of mere academic interest, turns out to have potential for significant practical consequences that we briefly outline.

To be clear, in the discussion that follows, we are concerned with the decussation of entire organized tracts, because this is the topic of developmental and regenerative efforts. We are not

concerned here with crossings (e.g. primitive escape mechanisms) that occur only because a local pathway or reflex needs to get to the other side of an organism.

Effects of 3-dimensionality:

We begin with the self-evident observation that crossed connections seem to be unnecessary. As depicted in cartoon form in Fig. 1(a), an idealized 2D “brain” can be connected point-to-point with its counterpart “body” motor or sensory system without any need to cross connections. On the other hand, brain and body structures reside in three-dimensions (3D), and the situation changes markedly for 3D networks⁸⁻¹⁰. To see this, consider the simplest excursion into three dimensionality: that which results when a flat sheet is folded out of the plane. This is indicated by the arrows and the resulting caricature shown in Fig. 1(b). We first examine the case shown, in which both brain and body are folded in the same orientation; we consider another folding orientation shortly.

Folds in the nervous system are a topic unto themselves: folds are ubiquitous in the mammalian cerebellum and in the primate cerebral cortex, and folding abnormalities are implicated in developmental disorders including autism¹¹ and polymicrogyria^{12, 13}. The effects of folds *per se* are beyond the scope of the present paper; for our purposes, we focus on the observation that as Fig. 1(b) shows, when the connections travel through a central column, crossings can appear from no cause beyond the act of folding of a sheet into 3D.

We emphasize that the act of folding – and the consequent crossings of connections – shown in Fig. 1 has no bearing on the ability of a 2D brain and body to communicate. Two sheets can be wired point-to-point and then folded to any degree of complexity without any loss of information. However, the central point that we will demonstrate is that these folds and crossings are crucial to the ability to convey 3D information.

The distinction between the 2D sheets of the cartoon brain and body and the 3D environment in which the body resides (and which the brain reconstructs as a stereognostic model) is not obvious, and a goal of this paper is to analyze this distinction in some detail. We begin by analyzing the relevance of the crossings that result from the fold shown in Fig. 1(b).

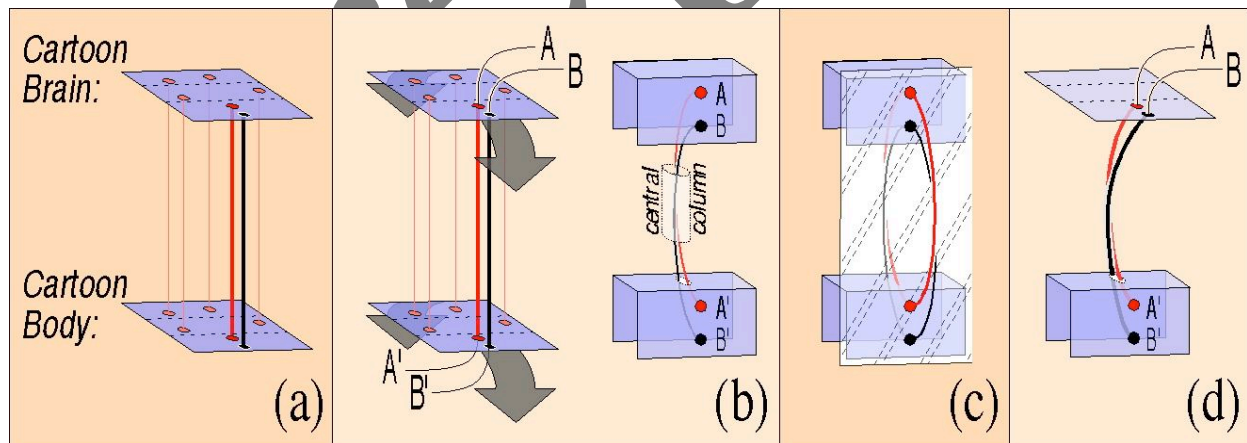


Figure 1 – Cartoon depictions of connections between a “brain” and a “body” in (a) 2D and (b) when folded into 3D. (a) For 2D brain and body, elements can be connected point-to-point without crossings. (b) Once brain or body extend into 3D in the orientation shown, connections that travel through a central column must cross. (c) Crossings of connections are formally defined to occur if a mirror reflection about a symmetry plane (hatched) generates an inseparable link as described in text. (d) Crossings can appear if only the body is extended into 3D as well.

Crossings:

The cause of the crossing shown in Fig. 1(b) is not mysterious: it is merely the fact that once point A in the figure has been connected to its counterpart, A', point B *beneath* cannot be connected to B' in the symmetric way shown on the right of the figure without passing around the A-A' connection.

Crossings are important to neuronal function for three reasons. One, the number of crossings ought to be minimized because each crossing takes up space and adds lengths to connections¹⁴⁻¹⁶, both of which violate Cajal's principles for neuronal organization^{17, 18}. Two, in order for axons to target accurately during development or following regenerative therapy, crossings must be (and are)¹⁹ tightly regulated. Put in simplistic terms, if a motor axon destined for the foot changes places – i.e. crosses inappropriately – with an axon destined for the hand, either motor function will be compromised or the crossing will need to be untangled in the brain before constructing the primary motor homunculus. And three, in order that crossings be minimized and accurately regulated, each crossing requires information to achieve. As we will show, some crossing strategies require more bits of information than there are active genes in the human genome, while others (especially decussation) require dramatically less information to achieve accurately.

We digress to clarify a mathematical point: the 'crossing' shown in Fig. 1(b) obviously depends on the projection shown in the cartoon, however crossings can be unambiguously defined. One way to do so is to choose one fixed projection and mirror-reflect connections across a plane parallel to the projection plane – as shown in Fig. 1(c). In this way, the original connections combined with their reflections define an inseparable 'link' if and only if the connections cross in that projection²⁰. Also at this point, we remark that crossings can appear if only the *body* is extended into 3D – an illustration of such a situation is shown in Fig. 1(d). Thus in the discussions that follow, one can consider the cartoon 'brain' to literally be a portion of the 2D cortex (e.g. the primary somatosensory cortex), or one can view the cartoon brain as being the stereognostic representation of the body's environment²¹. Rather than draw both, in our discussions we sketch only the latter representation because in this case both the body and the brain can be depicted as 3D objects, which makes analysis and discussion more straightforward than in the former, mixed 2D/3D representation. The reader should, however, remain aware that except where otherwise stated, the 3D 'brain' that we sketch represents the stereognostic reconstruction of the body's environment, and to arrive at this reconstruction the brain uses both 2D processing systems (e.g. the somatosensory cortex) and 3D ones (e.g. the VPLN of the thalamus²²). We clarify this distinction in concrete examples shortly.

Why do crossings occur at all?

In light of the observations that crossings ought to be minimized, both in principle and to reduce genetic information, we raise a very basic question: why does they central nervous system employ crossings at all? For example, the configuration shown in Fig. 2 eliminates crossings altogether. In this configuration, the body and brain cartoons are folded in opposite directions, and consequently the positions of points A' and B' in Fig. 2(b), are reflected top to bottom with respect to their somatotopic images, A and B. On the other hand, images of points that are separated *horizontally* are not reflected. This implies that there must be a singularity in 3D representations of space along the bold green lines shown in Fig. 2(b). We reiterate that these singularities do not affect processing of 2D location on either surface sketched, but are critical to processing of 3D representations. On these singular lines, both an upright somatotopic image (in the horizontal plane) and a reversed one (in the vertical plane) co-exist. This means that in order to track an ant crawling along the skin, the brain would need to reverse its somatotopic map as the ant crawled up one's chest (vertical and therefore reflected) and then over one's shoulder (horizontal and therefore upright). This presents an absurd state of affairs to any control or sensation network.

This is a peculiar assertion that may be difficult to visualize. To demonstrate this effect, we therefore consider two examples in the configuration shown in Fig. 2. First, we examine how 3D somatotopic sensation would appear in such a configuration, and second we describe how 3D motor function would change without crossings.

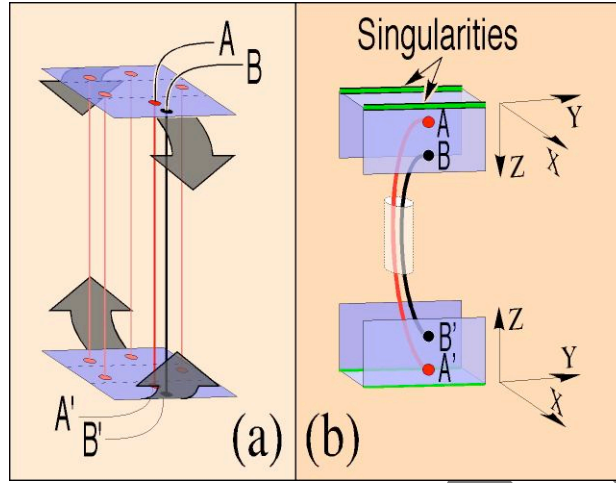


Figure 2 - (a) Cartoon of alternative construction in which brain and body surfaces are folded in opposite directions. (b) Crossings are now eliminated, but the vertical coordinate of the body and its percept are reversed, while the horizontal coordinates remain upright: note that the upright coordinates of the “body” are shown as (X,Y,Z) , while those of its representation in the “brain” are $(X,Y,-Z)$. Crucially, this produces geometric “singularities” (green) in somatotopic mapping, where the upright horizontal plane meets the reversed vertical plane, as described in the text.

Example 1: 3D Sensory Somatotopy without crossings is intractably complicated

As a first example, in Fig. 3(a) we sketch a finger wired without crossings beneath a caricature of the brain. Light touch receptors on a finger lie on a single dermatome on a 2D sheet; likewise the location of the finger in the primary somatosensory homunculus lies on a 2D sheet, so that this is as exact as one can make such a representation. In keeping with our earlier remarks, for simplicity of discussion, we sketch the brain as a 3D stereognostic reconstruction of the finger’s environment and not as the intermediate 2D somatosensory cortex, but the reader can confirm that in this case, the results that we describe would apply equally if the sketches illustrated the ‘brain’ as a single flat sheet.

If the system shown is connected without crossings, a point $(X,Y,Z)_{\text{body}}$ in the finger’s environment must become mapped to a point $(X,Y,-Z)_{\text{brain}}$ in the stereognostic percept in the brain. This dictates that horizontal positions $(X,Y)_{\text{body}}$ are mapped upright to $(X,Y)_{\text{brain}}$, but vertical positions $(X,Z)_{\text{body}}$ are inverted to $(X,-Z)_{\text{brain}}$. The negative sign in the vertical mapping (and its lack in the horizontal one) causes the finger’s percept to be intractably complicated.

To make the problem concrete, we imagine that the finger touches a cube with embossed lettering of the character “@” on all sides, and we sketch the percept of the lettering on an upper cube. In Fig. 3(b), we show the character and its percept when the *side* of the finger touches the embossed character, whereas in Fig. 3(c) we show the character and its percept when the *pad* of the finger touches the embossed character. As these figures make evident, when the *side* of the finger touches the embossed @, the image on the 2D primary somatosensory cortex would be correct, but any conversion to produce a 3D stereognostic location would follow a reflected, @-shape. By comparison, when the *pad* of the finger touches the same embossed @, the brain would perceive it correctly. Tasks such as reading Braille with the pad versus the side of a finger, identifying the direction on the body an insect might crawl along, and

producing consistent percepts of multiple differently-facing body parts would be prohibitively complicated in any but the simplest organism wired in this way.

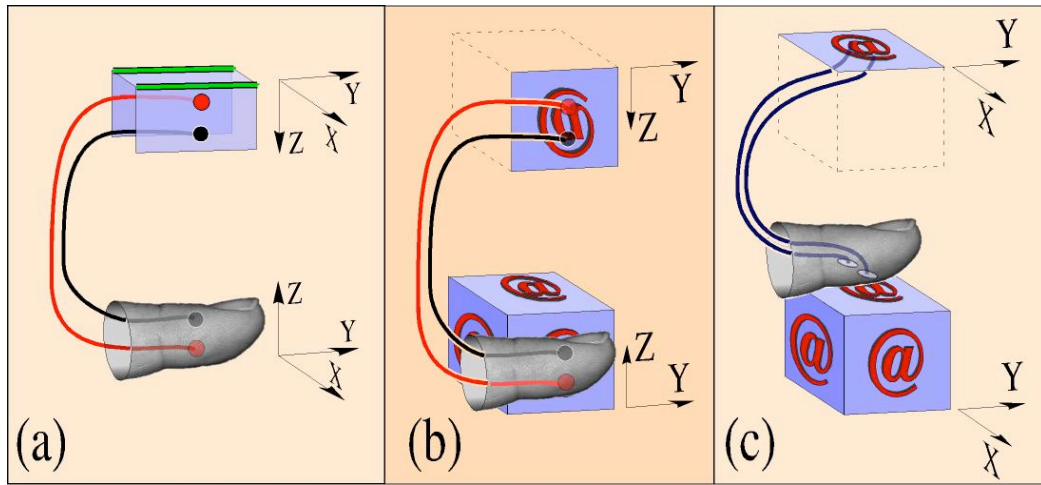


Figure 3 – Effect of removing crossings between body and brain on 3D sensory representation. (a) Illustration of connections made without crossings between two points on the side of a finger with a cartoon of the primary somatosensory cortex. The red and black spots respectively are in the positions shown in Fig. 2(b). (b) Side of the finger touching the vertical exterior of a cube embossed with the character, '@' and the 3D representation, @, of the embossed character. (c) Pad of the finger touching a horizontal '@' embossed on the cube, and the 3D representation, @, of the embossed character.

Example 2: 3D Motor Function without crossings is slow and uncoordinated

The significance of the singularities shown in Fig. 2(b) between vertical and horizontal representations in a system wired without crossings can be illustrated more tangibly in a second example. Consider the control problem shown in Fig. 4, possibly familiar to the reader as a child's game. Here we depict moving our left index finger in a clockwise direction (as viewed from the right). It is manifestly trivial to simultaneously move the right index finger in the same direction, however it is markedly more difficult to move the right index finger in the opposite direction (counterclockwise viewed from the right). This problem is intrinsically associated with the brain's 3D representation of space: the difficulty is *not* present if the fingers are pointed forward: one can sketch forward-facing circles in either direction and with any speed with either hand²³. This is so because there are singularities in the motion shown in Fig. 4 that vanish when both fingers point forward.

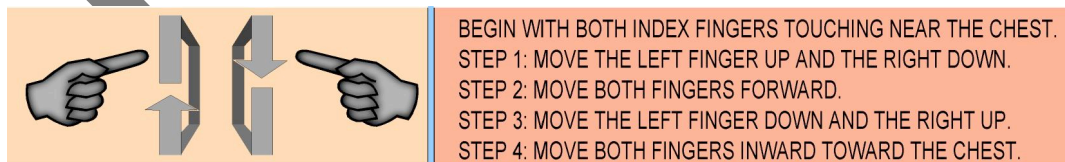


Figure 4 – Exercise illustrating the control difficulty when a normal and a reflected processing scheme co-exist. This is an intrinsically 3D problem: the difficulty vanishes if both fingers are pointed forward.

To identify these singularities, we dissect the motion of Fig. 4. With practice, one can perform the counter-rotating motion shown by using the strategy described to the right of the figure, in which each hand circumscribes a square in space. However to employ this, or any other effective, strategy, one must

at some singular point (the corners of the squares here) *simultaneously* move the arms *in-phase* in one direction (front and back in this example) and *anti-phase* in a different direction (up and down here)^{24, 25}. This singularity appears because the fingers are pointed in opposite directions: if one fingertip (pointing in the $+X$ direction) is represented as (X,Y,Z) , the other fingertip (pointing in the $-X$ direction) would be represented as $(-X,Y,Z)$. When both fingers face forward, left and right hands share a single coordinate system, and so the singularities – and the associated motor control problems – vanish.

This example provides us with an additional result as well, namely that without crossings, there is a loss of speed and control flexibility. This can be made evident by practicing the procedure described in Fig. 4, and then repeating the same procedure, but where the fingers cross at top and bottom of the same circumscribed squares (instead of front and back as previously). Achieving the first motion is of little help in learning the second – and similarly for a third motion, say where the fingers cross at 45° angles to the horizontal.

The clumsiness and loss of control flexibility is a mathematically unavoidable consequence of the fact that the singularity shown in Fig. 2(b) is discrete: it occurs along lines separating upright from inverted regions of space. In the same way, the corners of the circumscribed square of Fig. 4 define discrete points, and a new, rotated, square will define different points. It is not possible to develop a continuous control model from a discrete mapping such as this, and so flexibility is lost and:

- 1) each slightly different task demands a new relearning process; this is a well studied issue, termed task specificity, in the neuroscience literature²⁴, and
- 2) to perform previously learned tasks requires some mechanism of looking up previously memorized tasks from a stored library, which is inevitably slower, clumsier, and more prone to error than executing a generalized and continuous algorithm.

Because these attributes are mathematically determined, and follow only from geometrical constraints without reference to any particular physiology or organism, we conclude that any continuous 3D processing system that fails to cross connections and connects ipsilaterally through the reflection mechanism shown in Fig. 2(b) must suffer the specific control shortcomings described. This implies both that crossings play an important role in coordinated motion and that a lack of coordinated control must result if these crossings are not present.

To summarize, in example 1, the change in sign of the vertical coordinate in the 3D mapping of Fig. 3(a) leads directly to a singularity that results in an inability to distinguish upright from inverted stereognostic images. This singularity can be removed by allowing connections to cross as in Fig. 1(b): in this case, both the 3D ‘body’ and the 3D ‘brain’ become oriented identically. Similarly in example 2, a change in sign in the control problem of Fig. 4 generates singularities that interfere with motor function. This singularity can be removed by pointing both fingers in the same direction, which changes the minus sign directly²³. Thus the second example may be viewed as an analog (in physical space where we can see it) of the same structural concepts that are present in somatotopic network connectivity (which we cannot so easily see). In either case, we find that structural crossings are directly related to functional consequences.

Alternative Crossing Strategies

Since configurations of connections lacking crossings evidently present profound 3D sensory and motor control problems, we next turn to examining alternative configurations of crossings that, as we will show, have different quantitative and qualitative advantages over one another.

Alternative 1: rotation:

A first alternative to the crossing scheme shown in Fig. 1(b) is illustrated in Fig. 5(a), where the brain is depicted as being rotated about the x-axis (green arrows). We label top, bottom and side surfaces of a body and a brain ‘cube’ to clarify relative orientations. In this case, Fig. 5(a, left) shows that the wiring of the connections A-A’ and B-B’ that appears in Fig. 1(b) is untangled as a result of turning the brain upside down. In this respect, the rotation is similar to the reflection that unravels crossings entirely in Fig. 2. On the other hand, although this crossing has been unraveled, a new set of crossings is introduced. This is shown in Fig. 5(a, right), where we illustrate that the new points, C and D, which would not cross in the unrotated configuration (Fig. 1(b)), must now cross on their ways to their destinations, C’ and D’.

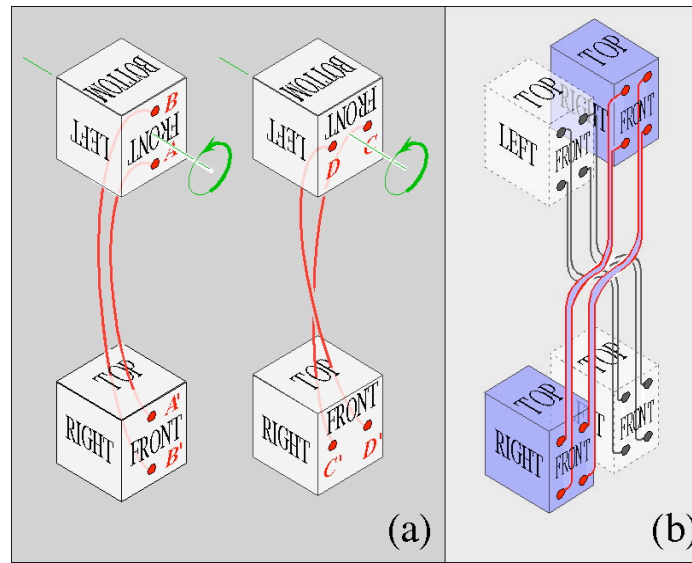


Figure 5 – Cartoons of connections between 3D systems that are (a) rotated, and (b) lateralized and decussated. (a, left) If the brain is rotated, e.g. around the green axis shown, the original crossings indicated in Fig. 1 are removed, but (b) these are replaced with other crossings. (b) In a system divided laterally into halves, a decussated network can be established. In this case, crossings occur between tracts (shown in red and black), but there are no crossings within a tract as in other geometries.

Rotation of the brain or body therefore trades one type of crossing for a second. All possible rotations will produce this result, because in the problem we have defined, connections between vertically displaced points cross, but those between horizontally displaced ones do not (cf. Fig. 1(b)). Any rotation that removes the crossings of vertically displaced points necessarily occurs about a horizontal axis, and such rotations produce new crossings of previously uncrossed connections. It is a corollary of longstanding mathematical theorems^{20, 26} that these crossings can be rearranged, but not removed, by further rotations, say about the vertical axis.

Alternative 2: Decussation:

A final approach to disentangling the crossed connections of Fig. 1(b) is to decussate connections across the midline as shown in Fig. 5(b). In this state, the front face of the “brain cube” on the right would connect appropriately with the front face of the left “body” cube. Similar connections can be made between all the faces of the cubes. Here the “brain” cube is separated into two lattices, one representing each side of the body. As shown in the figure, crossings appear in a lateral and decussated network, but they are *between* commissural tracts that traverse the midline, and not *within* tracts, or bundles, as before.

We have speculated in the Introduction that the decussated configuration presumably conveys some functional advantage over the alternatives shown in Fig's 1(b) or 5(a). From our preceding analysis, it seems that crossings cannot be removed entirely without functional penalty, so we turn next to evaluate quantitatively how decussated crossings differ from other crossing geometries.

Analysis:

Numbers of Crossings & Somatotopy:

Comparisons of the numbers of crossings associated with upright, rotated, and decussated configurations provide useful insights. In the upright configuration, connections between vertical columns of nodes naturally organize into bundles, as depicted in Fig. 7, inset (a). If there are n_z vertical layers of nodes and $N = n_x n_y n_z$ nodes in all, then there must be N/n_z bundles, each of which has $(n_z-1)+(n_z-2)+(n_z-3)+\dots+1 = n_z(n_z-1)/2$ crossings, so there are $N(n_z-1)/2$ crossings in all. By contrast, as is shown in inset (b) to Fig. 7, in the rotated configuration, nodes on the entire front surface connect via a single bundle that crosses at the midline, producing $n_z n_y (n_z n_y - 1)/2$ crossings. If there are n_x such layers, then there are a total of $N(n_z n_y - 1)/2$ crossings in the rotated configuration.

This combinatorial arithmetic indicates that the rotated configuration has more crossings than in the upright one. Since each crossing must be navigated correctly during development to achieve an intended function, a configuration with many crossings is *prima facie* more prone to navigational, or “targeting”, errors than one with fewer crossings. From this standpoint, the upright configuration is evidently superior to the rotated one. However, the rotated configuration has an advantage over the upright configuration, because its connections are not broken up into separate bundles and so are intrinsically somatotopically ordered.

In a well-ordered system, it is straightforward to compare the information required to establish somatotopic connections. If we calculate the number of times that somatotopic ordering is broken, we find that the rotated system has no changes in ordering from element to element but, in the upright configuration, the ordering of connections changes between each of the N/n_z vertically oriented bundles. Thus, this system has $N/n_z - 1$ re-orderings of connections, and correspondingly at least $N/n_z - 1$ bits of information must be carried by any targeting or information processing procedure.

The third, or decussation, approach to disentangling the crossed connection essentially translates the lateral halves of brain or body into a decussated network as shown in Fig. 5(b), by moving one half of the brain (red connections) rightward as shown in Fig. 5(b) (or equivalently by inserting connections from the opposite side of brain nodes), and *vice versa* for the other brain half (black connections). This translation is remarkably effective in removing crossings. Notice that there are *no crossings of connections at all* within either colored tract in this configuration. As shown in the figure, crossings appear in a lateral and decussated network, but they are *between* commissural tracts that traverse the midline, and not *within* tracts, or bundles, as before.

In a decussated configuration, the number of neighboring connections that must negotiate crossings is at most the number of contacts between tracts (since connections *within* a tract remain adjacent to their neighbors). In a simple cubic brain or body, this number is n_x^2 . This is an ideal bound since decussation between lateral halves occurs via tracts of axons in real organisms. In such a case, the number of crossings is $b n_x^2$ and b is the number of tracts present¹⁹. In contrast with other ordering schemes, translations shown in Fig. 5(b) maintain exact somatotopic ordering except at the interface between left and right halves where the number of somatotopy violations is $n_x n_z$.

The information content required to accurately guide connections in a decussating configuration is $2b$ where b is the number of bundles. Once a bundle is specified¹⁹, a connection need only know which side of the midline to travel to and (provided it engages in no additional deviations) it will arrive correctly placed at its destination. Thus, a decussated network provides a marked reduction in the information required to establish somatotopy

In systems that are lateralized into left and right decussating halves in this way, it is intriguing to note the following unexpected and subtle mathematical development. Consider a lattice of nodes as shown in Fig. 6, enumerated in the body top-to-bottom and then right-to-left. Any other systematic numbering scheme would work as well; this scheme is convenient for purposes of illustration. In this figure, we depict only the frontmost set of grid elements for simplicity. Enumerated in this way, connections in Fig. 6(a) become labeled: $S_1 = [1,2,3,4,5,6,9,8,7,12,11,10]$ as shown in red in the figure. That is, although the body is consistently ordered, one half of the connections is somatotopic, but the other half is not. It is not clear whether there are physiological correlates to this mathematically allowable configuration, however the existence of right vs. left handedness suggests that motor function (and by inference, plausibly somatotopic organization as well) in opposing halves of an organism can differ significantly⁸.

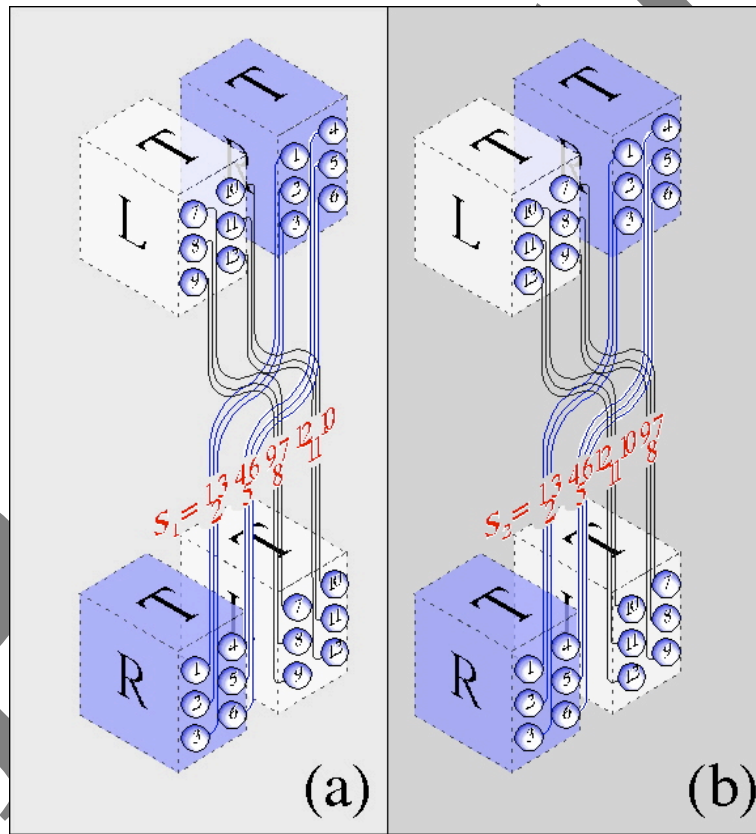


Figure 6 – Decussated wiring alternatives in lateralized system. (a) Laterally antisymmetric configuration with decussation across the midplane. (b) Alternate ordering of nodes: in configuration (a), numbering in the ‘body’ is sequential, top to bottom and left to right, but this produces non-isotropic ordering of connections on one side. In (b), connections and nodes are all consistently and somatotopically ordered from lateral to medial.

An alternative ordering scheme that does not suffer from this somatotopic asymmetry is the one depicted in Fig. 6(b): here brain and body are ordered from top to bottom and from *lateral to medial*. Now the connections in either half remain somatotopically ordered, and only across the midline is there a

discontinuity: the ordering here is $S_2 = [1,2,3,4,5,6,12,11,10,9,8,7]$. This organization parallels that of the somatotopic distribution of both motor and sensory functions. If lower numbers represent the distal parts of the body and higher numbers represent the proximal parts, the pattern of Fig 4(b) would suggest that the legs would be laterally distributed while the arms and head would be medially distributed. Either ordering scheme shown in Fig. 6 is mathematically permissible, and we speculate that the one that achieves better function in a given application (e.g. coarse vs. fine motor control) is selected for by evolutionary or developmental pressures.

Effect of System Size:

Thus far, we have explored three transformations that alter the character of crossings of connections in 3D. Although these examples are not comprehensive, they nevertheless present a clear means of quantitatively comparing categories of transformations. Table 1 summarizes the effects of rotation and decussation on numbers of crossings and violations of somatotopic ordering as a function of system size, as expressed as the number of nodes, $N = n_x n_y n_z$, in a cubic grid of dimensions n_x , n_y , and n_z (we exclude the reflected case because of its functional irregularity).

Table 1 provides a concrete mechanism for evaluating the relative fitness of the different configurations. Specifically, each crossing must be successfully navigated during development in order for axons to reach their correct destination²⁷. Crossings, like any other mechanical operation, are inevitably associated with a finite error rate – particularly in physiological systems that are often significantly influenced by noise^{28, 29}. Therefore the numbers of times that a crossing will be erroneously navigated – and hence that an axon will be diverted from its destined target – can be anticipated *a priori* to be simply proportional to the number of crossings.

In practice, systems that successfully operate in the presence of noise are bound to employ mechanisms for correcting inevitable errors. The central nervous system (CNS) does this by producing many more neurons and connections than are necessary, and then removing incorrectly connected fibers through axonal retraction or neuronal apoptosis³⁰. To explore the topological implications for error correction, in Table 1 we also itemize the number of times that adjacent connections deviate from regular somatotopic ordering, under the presumption that such ordering can only aid in directing neighboring connections to their correct targets.

| | Upright | Rotated | Decussated |
|------------------------------|------------------------|----------------------------|------------|
| Crossings | $\frac{N(n_z - 1)}{2}$ | $\frac{N(n_z n_y - 1)}{2}$ | $b n_x^2$ |
| Violations of somatotomy | $n_x(n_y - 1)$ | 0 | $n_x n_z$ |
| Required information content | n_z | $n_y n_z$ | 2b |

Table 1 – Numbers of crossings of connections and violations of somatotopic mapping for the three configurations depicted in Fig. 1(b) (“Upright”), Fig. 5(a) (“Rotated”), and Fig. 5(b) (“Decussated”).

From Table 1, it is evident that numbers of crossings grow faster than linearly with numbers of elements for upright and rotated configurations, but slower than linearly for the decussated case. This property produces profound differences in the numbers of elements at which crossing mistakes first appear. Fig. 7 shows the effect of the number of elements, N , on inverse of the onset error rate, $1/\epsilon$, at

which miswirings can first be anticipated. The meaning of this plot is that below a given curve, miswirings can be expected to occur; above the curve, miswirings will likely not occur.

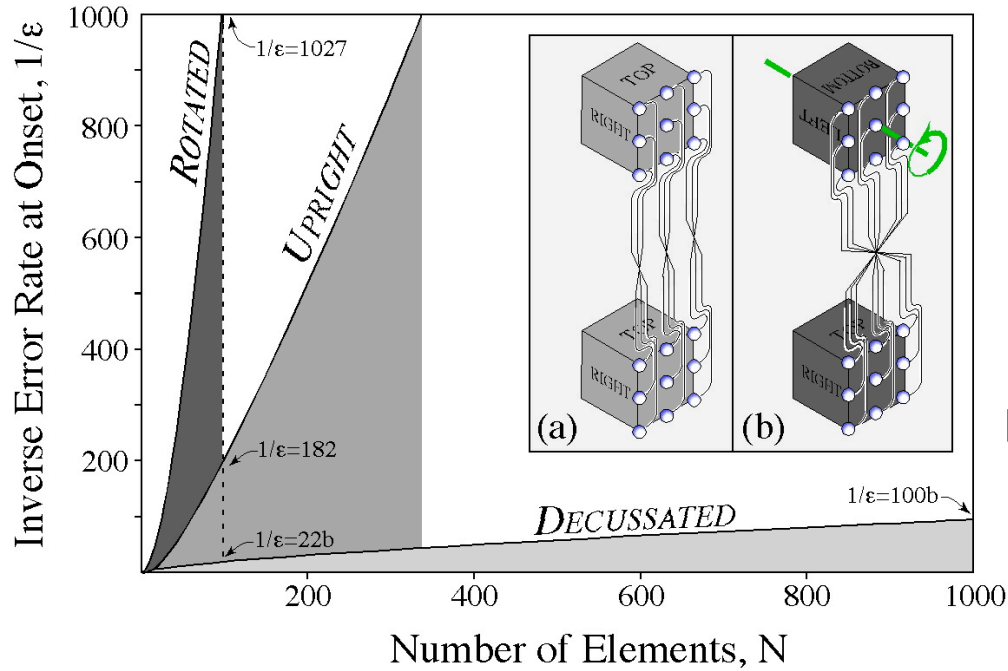


Figure 7 – Main plot: estimate of the relative robustness of three configurations to wiring errors as a function of the number of elements, N . As N grows, the error rate needed to prevent miswiring becomes dramatically lower for the decussated configuration than for either upright or rotated alternatives. Insets: (a) in upright configuration, vertically separated nodes associate into tracts of crossed connections; (b) in rotated configuration, nodes cross one another within a single bundle (only the frontmost layer of lattice nodes are shown for simplicity).

Thus in a system with $N = 100$ elements (broken vertical line in main plot), one can on average tolerate an error rate of 1:22b in the decussated configuration before encountering miswirings in which a connection is diverted from its intended course by noise. In the upright and rotated configurations, by comparison, one needs to maintain an error rate of 1:182 and 1:1028 respectively to avoid miswirings. Naturally from a design perspective, one would want to provide a safety factor, but these numbers give conservative estimates of the error rate at which miswirings are first to be expected.

From these estimates, for $N = 100$ the decussated network can produce an advantage of better than a factor of 8 in required error tolerance over the upright configuration, and nearly a factor of 50 over the rotated case. This advantage becomes more extreme as the number of elements (i.e. the system complexity) grows. Thus in tiny networks of say 10 elements, the required error rates at which miswirings can first be expected are comparable for the three cases, whereas at $N = 1000$ the contrast grows dramatically: miswirings will be found at $\epsilon = 1:100b$, 1:4500, and 1:49500 in decussated, upright and rotated configurations. Furthermore, from the final row in Table 1, it can be seen that for mammals with millions of axons within a single tract, the upright configuration requires hundreds of bits of information, the twisted configuration tens of thousands of bits, and the decussated network only twice as many bits as bundles crossing the midline. Thus unless hundreds to many thousands of genes are dedicated to regulation of crossings during development, only the decussated arrangement can possibly be feasible.

This analysis implies that sufficiently large networks are virtually required to decussate to reduce connection errors if 3D somatotopy is needed. These results are generic: even if a system develops other

strategies for reducing erroneous connections, – e.g. removal of erroneous connections or increased numbers of bundles – for sufficiently large N , the decussated network will unavoidably suffer fewer wiring errors.

Evolutionary Simulation:

Since miswiring of motor or sensory systems is likely to convey functional, and hence evolutionary, disadvantages, we speculate that there should be an evolutionary drive toward decussated networks in complex processing systems. On the other hand, as we have mentioned earlier, executing decussation successfully during development involves complicated and precise mechanisms, and so in very simple systems – e.g. networks containing fewer than several hundred axons – error rates under 0.1% could be achieved in an ipsilateral, upright, organization. Even the most primitive organisms such as *C. elegans* have several hundred neurons, hence one would expect most nervous systems – particularly those that involve 3D spatial processing – to incorporate decussation as a mechanism for somatotopic error management.

Evidently, there is a dramatic quantitative advantage in robustness of complex decussated networks against occasional miswiring errors, as compared with the alternative configurations considered here. Moreover, for the organization scheme shown in Fig. 5(b), each lateral side of the network can be perfectly somatotopically organized, which we have suggested may also be of functional value. These mathematical results beg the question, however, of how the complex developmental mechanism of decussation – involving accurate pathfinding of potentially millions of axons through as many counter-directed trajectories – has evolved in so many different systems and organisms.

To investigate how this could occur through random mutations, we construct a direct network simulation that randomly rewires itself and evolves so as to maximize its relative fitness^{31, 32}. Such a simulation is also of interest because it may provide insight into rewiring efficiency in regenerated systems. The simulation initially connects a 3D lattice of ‘brain’ nodes point-to-point in the simplest way possible with an identical arrangement of ‘body’ nodes in much the same way as in the classic “Tea-trade” model^{33, 34}. The program then repeatedly re-assigns connections by choosing two brain nodes at random and interchanging their connections. If the total number of crossings throughout the lattice network is reduced by the interchange, then it is kept, otherwise the original configuration is restored. A crossing is defined to occur if lines connecting the given nodes pass within a small distance, ϵ , of one another ($\epsilon = 1/20$ of the inter-nodal spacing in the simulations that we show). Notice that simulation selects for changes that reduce the number of crossings of axons anywhere in the network, but has no intrinsic preference for decussated or non-decussated configurations: whichever creates the smaller total number of crossings will be selected.

Fig. 8 shows outcomes after 100,000 generations (i.e. random attempted interchanges), for two initial configurations of $10 \times 10 \times 10$ lattices of brain and body nodes. First, in Fig. 8(a)-(b), we show the evolution starting from a state in which the nodes were connected in the upright configuration of Fig. 1(b). Second, in Fig. 8(c)-(d) we show the evolution starting from the decussated configuration of Fig. 5(b). Thus in the first, ipsilateral, state, very few connections crossed a midplane to start with, while in the second, decussated, configuration, almost all axons crossed the midplane in the Y direction and almost none crossed the midplane in the X direction. To simulate small wiring errors, each initial state is perturbed from this ideal state by switching the connections of 10 randomly chosen pairs (i.e. 2% of the 500 pair total).

To determine whether the prescribed random mutational rewiring results in more or less somatotopic ordering, in Fig’s 6(a), we color code body nodes to agree with the color of the brain nodes to which they are connected. The brain node colors remain unchanged throughout the simulation – so initially the brain and body would look identical, but after 100,000 generations, the body becomes

significantly disordered, as shown in the magnified view beside Fig. 8(a). To quantify the extent of ordering and decussation, in Fig. 8(b) we plot the fraction of connections that cross a midplane in either the X- or the Y-direction. For the upright state, midplane crossings grow until they saturate at about 1/4 crossings in either X or Y after about 10,000 generations. The 1/4 crossing state is a consequence of simple probabilistic considerations: once in this state, altering any connection has an equal probability of improving or worsening the number of crossings. In short, the simulation shows that mutational rewiring of an ipsilateral network increases the number of intra-tract crossings, saturating with about a quarter of the axons crossing the midplane. The rewiring also results in a degradation of somatotopic mapping.

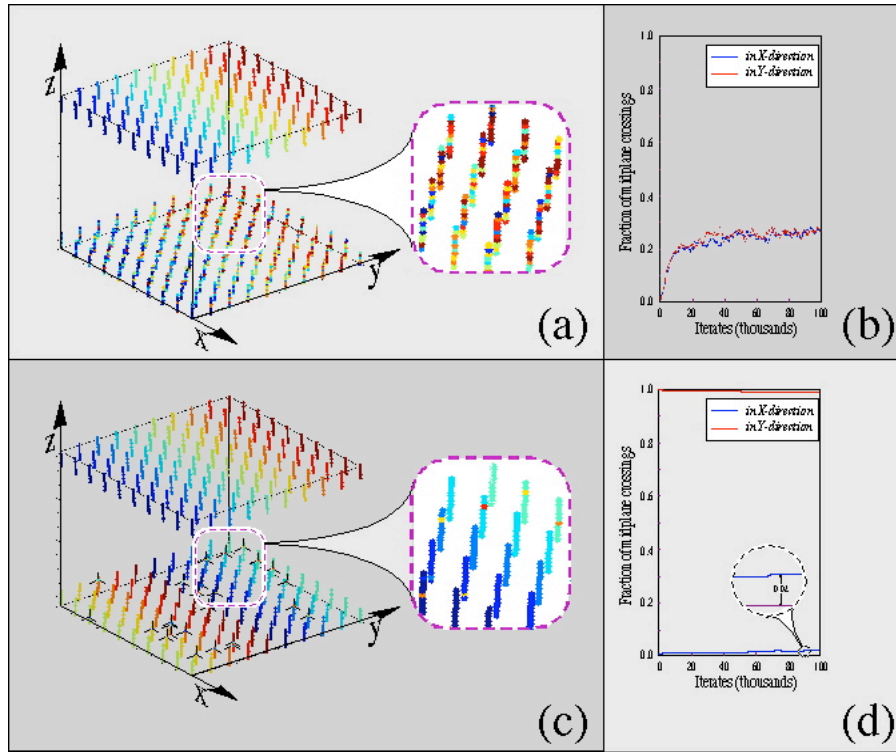


Figure 8 – Evolution of (a), (b) nearly upright and (c), (d) nearly decussated states described in text. Plots (a) and (c) show color coded correspondence between 1000 brain (above) and body (below) nodes after 100,000 generations of rewiring algorithm that reduces the number of crossings between neighboring connections, and (b) and (d) show associated fractions of midplane crossings in the two simulations. Note that in the decussated configuration, almost all connections cross the midplane (in the Y-direction), nevertheless the total number of crossings between individual connections is seldom improved by rearrangements.

This situation is quite different if the system is initially decussated. In Fig. 8(c)-(d) we show the corresponding evolution starting from a state that is initially decussated in the Y-direction and ordered in the X-direction, but with 10 pairs of randomly chosen connections interchanged as before. We identify the disordered connections after 100,000 generations in Fig. 8(c) with black tripods. The magnified inset illustrates that the initial ordering is largely retained: anomalously colored dots indicate the few non-somatotopic connections. In the final state, 2.5% of connections are disordered, as compared with 2% initially. If we quantify the midplane crossings as before, we find this tendency to remain ordered is confirmed, as shown in Fig. 8(d).

These simulations indicate a plausible mechanism by which decussated systems could have evolved using only random mutations in independent systems whose fitness depends on wiring accuracy. Specifically, the simulations demonstrate that there is a dramatic quantitative advantage in robustness of

decussated networks against miswiring events, as compared with the alternative ipsilateral configuration. If an ipsilateral 3D Cartesian network of 1000 nodes randomly evolves to reduce crossings of connections, then an initial small fraction of wiring errors will diverge to approach a stochastically dominated state within 10,000 generations. By contrast a decussated configuration with the same initial wiring error will remain stable over 100,000 generations. Associating connections into tracts or bundles (not done in this simulation) would only accentuate the advantages of the decussated configuration, as indicated in our earlier analysis of the effects of system size.

Discussion:

Mathematical Findings

This study gives rise to several unambiguous mathematical findings. Some of these findings are counterintuitive; nevertheless they are matters of mathematical certainty independent of physiological considerations. In particular, for all functional lateralized, point-to-point, somatotopic, 3D networks:

- 1) Crossings must occur as a matter of mathematical necessity, regardless of network complexity. In simpler or more primitive systems, these crossings may occur *within a tract* (as in Fig. 1(b)). In more complex systems, however, for reasons of reliability, crossings are strongly favored *outside of tracts* through the formation of decussated pathways (as in Fig. 5(b)).
- 2) There is a maximum number of neurons (between 100 and 500 depending on assumed targeting error rates) above which only a decussated configuration can be reliably wired. 3D systems larger than this maximum are unstable to rewiring events if wired ipsilaterally, but are significantly more stable if wired contralaterally in a decussated configuration.
- 3) If 3D motor or sensory systems are nevertheless wired without crossings (as in Fig. 2(a)), function will be compromised due to the need to process coexisting but contradictory spatial information that changes with orientation of the body.
- 4) Two identifiable wiring states appear in decussated arrangements. In one state, half of the body is somatotopically wired and the other half is not, implying better coordination on one side of the body than on the other. In a second state, wiring is symmetric left-to-right, but is asymmetric lateral-to-medial. These two states can co-exist in different systems, for example the gross motor system can be of one type and the fine motor control can be of the other.
- 5) In systems with millions of connections, either the decussated mechanism of crossing must be adopted, or hundreds to thousands of genes must be dedicated to the regulation of crossings during development.
- 6) Finally, it is notable that only one of brain or body need fold for the considerations that we address to come into play. Thus in Fig. 1(d) we show that folding only the body in the manner done in Fig. 1(b) produces. Thus only one of the brain or body need reside in 3D for crossings to be produced.

Physiological Interpretation

These findings have a number of physiological implications. First, the findings indicate that decussated pathways are prevalent in vertebrate nervous systems because decussation minimizes pathfinding errors and genetic information content required, and thereby provides significant evolutionary advantages. Surprisingly, even in small networks of only 100-1000 neurons – on the order of the number of neural connections in common insect tracts – decussation can reduce the rate of erroneous connections

by over an order of magnitude. Hence we predict that 3D networks larger than this – and so spatially dependent tracts of animals more complex than insects – must decussate in order to function reliably.

Second, the findings have implications for the regeneration of somatotopic connections following injury. Major decussated systems (e.g. the corticospinal and spinothalamic tracts) are often disrupted by spinal cord injury. Current neuronal regeneration strategies are based on the hope and expectation that if spinal axons can be regrown, motor and sensory function will be restored. Our results show that functional recovery will depend on specific and appropriate crossing pathways being maintained. Thus, for example, if regeneration occurs toward an upright (Fig. 1(b)) or an inverted (Fig. 2) state with equal likelihood (and we know no *a priori* reason to assume otherwise), then fully half of patients can be expected to suffer functional impairment associated with processing coexisting but contradictory inputs.

The indication that a lack of crossings may cause somatotopic motor and sensory dysfunctions carries particular urgency in regeneration research, where it has been demonstrated that CNS axons can be provoked to sprout across the midline³⁵ following spinal cord injury, thus undoing the crossings accomplished by decussating tracts. Among our results is the finding that it is imperative that contralateral, decussated, connections be maintained; otherwise, somatotopic sensation and coordinated motion will be defeated.

Third, the findings potentially give insight into developmental disorders. Several neurological dysfunctions are associated with the failure of spinal tracts to decussate during development^{5, 36-39}. It is known that decussation is mediated during normal development by cellular adhesion molecules (CAMs) including the L1 subfamily^{36, 40-43}, and the failure to properly express these molecules has been linked to developmental disabilities including deficits in spatial learning^{5, 38, 39}. Additionally, it has been demonstrated that disrupting the expression of these CAMs during development interferes with pyramidal decussation in a mouse model, producing living animals with motor and spatial learning deficits^{36, 37}. Similar results are known in humans as well, where mutations of L1 produce developmental disabilities (SPG1 & MASA syndrome) that involve deficits in spatial learning^{5, 37, 38, 44}. Thus one of the chief regulators of decussation is also implicated in motor and spatial learning functions, seemingly in the way defined by our geometric analysis. Likewise in Joubert syndrome, a congenital failure to decussate is believed to be a significant contributor to severe clumsiness in afflicted patients⁴⁴.

These data are not definitive, but are consistent with our mathematical predictions that networks that have no intra-tract crossings and in which decussation has been defeated (i.e. Fig. 2(a)) must give rise to spatial dysfunctions. We look to future investigations to identify which of these potential links between structure and function are real and which are merely coincidental.

Simplicity meets reality: comparisons

Obviously the mammalian CNS is nowhere as simple as the caricatures sketched in our figures. The CNS contains non-decussated, partially decussated, decussated, and even doubly-decussated⁴⁵ pathways. Moreover, several motor and sensory tracts have multiple stages, only one of which decussates. Therefore appropriate care needs to be taken in comparing specific neuronal structures with the mathematical findings and physiological interpretations that we have outlined. A crude inventory can be made by comparing the human gross and fine motor tracts, since gross control involves fewer connections than fine control. Here as predicted from our model, almost all gross motor tracts (which require comparatively few connections) are ipsilaterally wired. This includes the lateral vestibulospinal tract, the medial reticulospinal tract, part of the medial vestibulospinal tract and most of the medial corticospinal tract. The only exception is the tectospinal tract, and this notably coordinates head movement in response to 3D stimulæ. By contrast, almost all fine motor tracts (requiring comparatively more connections) are decussated. These include the lateral corticospinal tract and the rubrospinal tract. An exception is the lateral reticulospinal tract, only part of which decussates.

Exceptions such as this reinforce the importance of due care in interpreting our results, and lead us to examine three illustrative examples in detail. In all cases that we are aware of, even when a particular subsystem seems to operate without decussating, detailed examination confirms that *complex 3D* somatotopic function is invariably governed by decussated pathways, while simpler or 2D systems typically do not decussate.

A first example that illustrates this point is the rubrospinal tract: this is a non-decussating motor pathway that projects ipsilaterally from the red nucleus to specific spinal motoneuron pools⁴⁶. The corticorubral projection does decussate, however, and is somatotopic in the macaque⁴⁷. Thus although decussation does not appear in the form seen in the classic pyramidal level of the medulla, nevertheless decussation has evolved, in a different way, in the rubrospinal system. By comparison, the dorsal column pathway ascends ipsilaterally to terminate in the gracilis and cuneatus nuclei in the brainstem, and the axons of these nuclei then project somatotopically to the contralateral thalamus (e.g. in the rat^{48, 49}, the mole⁵⁰, and the raccoon⁵¹). The presence of these many morphologically and phylogenetically different decussation architectures in different 3D somatotopic functional systems reinforces our assertion that decussation is invariably selected for because it plays an essential role in these systems.

A second example is important to recovery of locomotor function following spinal cord injury. Adult rats with hemisectioned spinal cords have been found to recover bilateral locomotion within 2 weeks after lesioning^{35, 52}. This recovery has been shown to be associated with sprouting of axons across the midline from the intact side^{53, 54}. Since the new connections cross the midline, this example could appear to call the significance of decussation into question. However, *3D somatotopic* connection through the injury site is not required for locomotor function because this function is coordinated by a central pattern generator (CPG) present in the L2 spinal cord in rodents^{55, 56} and humans^{57, 58}. Since 3D somatotopy is not required to activate the CPG, either a decussated or an ipsilateral connection would work equally well from our analysis.

A final example concerns the only direct motor projection from the cortex to the spinal cord: the corticospinal tract. Here on the one hand, cortical axons that project somatotopically to the spinal cord decussate in primates⁵⁹ and in the rat⁶⁰. On the other hand, the rat does have a small ventral non-decussating pathway that can contribute to locomotor recovery⁶¹, and so the role of decussation in locomotion itself may be questioned. Data supporting this conclusion include recent results reporting that rats are able to walk with 5% of ventral spinal white matter⁶². Importantly, however, the ventral pathway *does not contribute to skilled forepaw movements*: in fact, these *3D somatotopic* functions are lost when the decussated tract is cut⁶³. These results support our analyses indicating that the pathways that decussate are precisely those that rely on effective function of spatially dependent and phylogenetically advanced systems.

To summarize, available anatomical and functional evidence is consistent with our mathematical findings that decussation is essential to *complex 3D* somatotopic function. In our first example, we illustrated the fact that decussation has been selected for in different ways for different 3D spatially dependent systems, but it is invariably selected for nonetheless. In our second example, we emphasized that *non-spatially dependent* functions can be activated with either a decussated or a non-decussated pathway. In our third example, we summarized data indicating that it is the *spatially dependent and phylogenetically advanced* functions that rely on decussated pathways.

Conclusion:

The relation between decussation and spatial motor and sensory function is especially important in spinal cord injury (SCI). SCI causes massive reorganization of neuronal projection in rats⁶⁴, monkeys^{65, 66}, and humans⁶⁷, and several well-known groups are investigating strategies to promote the regeneration of spinal axons across damage sites. Yet it is not at all clear whether, once successful strategies are

developed, regenerated spinal axons will engage in specific reconnection to appropriate targets. Specific reconnection does occur in the peripheral nervous system and in the neonatal central nervous systems. For example, crushed peripheral nerves maintain guidance cues for axonal regrowth and retrace their original path including branch points⁶⁸, and neonatal rats that regenerate across a thoracic cord transection site can recover locomotion with forelimb-hindlimb coordination⁶⁹. In adults, however, the case is considerably less certain: IN-1 treatment regenerates the corticospinal tract and restores locomotor function but as we have discussed, the mechanism appears to be due to sprouting of uncut corticospinal⁷⁰ and rubrospinal tract axons⁷¹. Since this sprouting *crosses the midline*⁵⁴, it seems arguable that even the most elementary guidance mechanisms (which would prevent such crossings) may not be active in the adult central nervous system. In light of our findings, it seems imperative to establish (a) the extent to which SCI reconnection after injury is specific, and (b) the capacity of the central nervous system to adapt to incorrectly rewired axons. Until these questions are definitively addressed, it will not be possible to predict the outcome of regenerative therapies for SCI patients, even once regrowth of CNS axons is effectively established.

Acknowledgments:

We thank Bernard Coleman, Richard Nowakowski and Kathryn Scarbrough for valuable insights and informative discussions. This work is partially supported by the New Jersey Commission on Higher Education.

References:

- [1] G.S. Hall, and E.M. Hartwell, "Bilateral Asymmetry of Function", *Mind* **9**, (1884) 93-109.
- [2] C. Marshall, "The Functions of the Pyramidal Tracts", *Quart. Rev. Biology* **11**, (1936) 35-56.
- [3] W.H. Wollaston, "On Semi-Decussation of the Optic Nerves", *Phil Trans R. Soc. Lond.* **114**, (1824) 222-231.
- [4] D. Misticchelli, "Researches on the Intimate Structure of the Brain, Human and Comparative. First Series. On the Structure of the Medulla oblongata", in Clarke, J.L., 1858 *Phil Trans. R. Soc. Lond.* **148**, (1709) 231-259.
- [5] M. Jouet, A. Rosenthal, G. Armstrong, J. Macfarlane, R. Stevenson, J. Paterson, A. Metzenberg, V. Ionasescu, K. Temple, and S. Kenrick, "X-linked spastic paraplegia (SPG1), MASA syndrome and X-linked hydrocephalus result from mutations in the L1 gene", *Nature Genetics* **7**, (1994) 402-407.
- [6] K. Letinic, and P. Rakic, "Telencephalic origin of human thalamic GABAergic neurons", *Nature Neurosci.* **4**, (2001) 931-936.
- [7] E.M. Hedgecock, J.G. Culotti, and D.H. Hall, "The unc-5, unc-6, and unc-40 genes guide circumferential migrations of pioneer axons and mesodermal cells on the epidermis in *C. elegans*.", *Neuron* **2**, (1990) 61-85.
- [8] J.P. Changeux, (Pantheon, NY, 1985), p. 235.
- [9] M.S. Graziano, C.S. Taylor, and T. Moore, "Complex movements evoked by microstimulation of precentral cortex", *Neuron* **34**, (2002) 841-851.
- [10] L.H. Snyder, K.L. Grieve, P. Brochier, and R.A. Andersen, "Separate body-and-world-referenced representations of visual space in parietal cortex.", *Nature* **394**, (1998) 887-891.
- [11] A.Y. Hardan, R.J. Jou, M.S. Keshavan, R. Varma, and N.J. Minshew, "Increased frontal cortical folding in autism: a preliminary MRI study.", **131**, (2004) 263-268.
- [12] X. Piao, R.S. Hill, A. Bodell, B.S. Chang, L. Basel-Vanagaite, R. Straussberg, W.B. Dobyns, B. Qasrawi, R.M. Winter, A.M. Innes, T. Voit, M.E. Ross, J.L. Michaud, J.C. Descarie, A.J. Barkovich, and C.A. Walsh, "G protein-coupled receptor-dependent development of human frontal cortex.", **303**, (2004) 2033-2036.
- [13] J. Piven, M.L. Berthier, S.E. Starkstein, E. Nehme, G. Pearlson, and S. Folstein, "Magnetic resonance imaging evidence for a defect of cerebral cortical development in autism.", **147**, (1990) 734-739.
- [14] D.B. Chklovskii, T. Schikorski, and C.F. Stevens, "Wiring optimization in cortical circuits", *Neuron* **34**, (2002) 341-347.
- [15] D.B. Chklovskii, and A.A. Koulakov, "Maps in the brain: what can we learn from them?", *Annu Rev Neurosci* **27**, (2004) 369-392.
- [16] A.A. Koulakov, and D.B. Chklovskii, "Orientation preference maps in mammalian visual cortex: A wire length minimization approach", *Neuron* **29**, (2001) 519-527.
- [17] S.R. Cajal, *Histology of the Nervous System* (Oxford University Press, NY, 1995).
- [18] S.R. Llinas, "The contribution of Santiago Ramon y Cajal to functional neuroscience.", *Nature Reviews Neuroscience* **4**, (2003) 77-80.
- [19] S. Yoshikawa, R.D. McKinnon, M. Kokel, and J.B. Thomas, "Wnt-mediated axon guidance via the Drosophila Derailed receptor", *Nature* **422**, (2003) 583 - 8.
- [20] W.R. Bauer, C. FHC, and J.H. White, "Supercoiled DNA", *Sci. Amer.* **243**, (1980) 118-133.
- [21] E.R. Kandel, J.H. Schwartz, and T.M. Jessell, (Appleton and Lange, NY, Norwalk, 1991), p. 452.
- [22] E.R. Kandel, J.H. Schwartz, and T.M. Jessell, (Appleton and Lange, NY, Norwalk, 1991), p. 342.
- [23] H. Bogaerts, and S.P. Swinnen, "Spatial interactions during bimanual coordination patterns: the effect of directional compatibility.", **5**, (2001) 183-199.
- [24] J.E. Salter, L.R. Wishart, T.D. Lee, and D. Simon, "Perceptual and motor contributions to bimanual coordination.", **363**, (2004) 102-107.
- [25] S.P. Swinnen, and N. Wenderoth, "Two hands, one brain: cognitive neuroscience of bimanual skill.", **8**, (2004) 18-25.

- [26] F.B. Fuller, "Decomposition of the linking number of a closed ribbon: a problem from molecular biology", *Proc. Nat'l Acad. Sci. USA* **8**, (1978) 3357-3361.
- [27] J.P. Changeux, (Pantheon, NY, 1985), p. 201.
- [28] J. van Pelt, A.E. Dityatev, and H.B. Uylings, "Natural variability in the number of dendritic segments: model-based inferences about branching during neurite outgrowth," *J. Comp. Neurol.* **387**, (1997) 325-340.
- [29] K. Wiesenfeld, and F. Moss., "Stochastic resonance and the benefits of noise: from ice ages to crayfish and SQUIDS," *Nature* **373**, (1995) 33-36.
- [30] C.G. Gross, "Neurogenesis in the adult brain: death of a dogma," *Nature Rev. Neurosci.* (2000) 67-73.
- [31] G.M. Edelman, "Neural Darwinism", New York: Basic Books (1987)
- [32] C. Koch, and G. Laurent, "Complexity and the nervous system," *Science* **284**, (1999) 96-98.
- [33] J. Dolman, "Evolution of topographical mappings in the brain", (2002)
- [34] D.J. Willshaw, and C.A. von der Malsburg, "Marker induction mechanism for the establishment of ordered neural mappings; its application to the retinotectal problem", *Phil. Trans. Roy. Soc. London B* **287**, (1979) 203-43;.
- [35] L. Schnell, R. Schneider, R. Kolbeck, Y.A. Barde, and ME Schwabb, "Neurotrophin-3 enhances sprouting of corticospinal tract during development and after adult spinal cord lesion", *Nature* **367**, (1994) 170-173.
- [36] N.R. Cohen, J.S. Taylor, L.B. Scott, R.W. Guillery, P. Soriano, and A.J. Furley, "Errors in corticospinal axon guidance in mice lacking the neural cell adhesion molecule L1", *Current Biology* **8**, (1998) 26-33.
- [37] H. Cremer, R. Lange, A. Cristoph, M. Plomann, G. Vopper, J. Roes, R. Brown, S. Baldwin, P. Kraemer, S. Scheff, D. Barthels, K. Rajewsky, and W. Wille, "Inactivation of the N-CAM gene in mice results in size-reduction of the olfactory-bulb and deficits in spatial learning", *Nature* **367**, (1994) 455-459.
- [38] L. Vits, V. Van Camp, P. Coucke, E. Franssen, K. De Boulle, E. Reyniers, B. Korn, A. Poustka, G. Wilson, C. Schrandt-Stumpel, R.M. Winter, C. Schwartz, and P.J. Willems, "MASA Syndrome is due to mutations in the neural cell adhesion gene L1CAM", *Nature Genetics* **7**, (1994) 408-413.
- [39] E.V. Wong, S. Kenwright, P. Willems, and V. Lemmon, "Mutations in the cell-adhesion molecule L1 cause mental-retardation", *Trends in Neurosciences* **18**, (1995) 168-172.
- [40] S. Backer, T. Sakurai, M. Grumet, C. Sotelo, and E. Bloch-Gallego, "Nr-CAM and TAG-1 are expressed in distinct populations of developing precerebellar and cerebellar neurons", *Neuroscience* **113**, (2002) 743-748.
- [41] D. Fitzli, E.T. Stoeckli, S. Kunz, K. Siribour, C. Rader, B. Kunz, S.V. Kozlov, A. Buchstaller, R.P. Lane, D.M. Suter, W.J. Dreyer, and P. Sonderegger, "A direct interaction of axonin-1 with NgCAM-related cell adhesion molecule NrCAM results in guidance, but not growth of commissural axons", *J. Cell Biol.* **149**, (2000) 951-968.
- [42] M. Grumet, V. Mauro, M.P. Burgoon, G.M. Edelman, and B.A. Cunningham, "Structure and Characterization of Nr-CAM, a new member of the Ig Superfamily that is closely related to Ng-CAM," *J. Cell Biol.* **113**, (1991) 1399-1412.
- [43] M. Lustig, L. Erskine, C.A. Mason, M. Grumet, and T. Sakurai, "Nr-CAM is Expressed in the Developing Mouse Nervous System: Ventral Midline Structures, Specific Fiber Tracts and Neuropilar Regions", *J. Comp. Neurol.* **433**, (2001) 13-28.
- [44] R.J. Ferland, W. Eyaid, R.V. Collura, L.D. Tully, R.S. Hill, D. Al-Nouri, A. Al-Rumayyan, M. Topcu, G. Gascon, A. Bodell, Y.Y. Shugart, M. Ruvolo, and C.A. Walsh, "Abnormal cerebellar development and axonal decussation due to mutations in AHI1 in Joubert syndrome," *Nat Genet* **36**, (2004) 1008-1013.
- [45] J.D. Pettigrew, in *in Vision and Visual Dysfunction: Vol. 2. Evolution of the eye and visual system*, edited by J.R.G. Cronly-Dillon, RL (CRC Press, Boca Raton, FL, 1991), p. 271.
- [46] M. Kuchler, K. Fouad, O. Weinmann, M.E. Schwab, and O. Raineteau, "Red nucleus projections to distinct motor neuron pools in the rat spinal cord", *J. Comp. Neurol.* **448**, (2002) 349-359.
- [47] K. Burman, C. Darian-Smith, and I. Darian-Smith, "Macaque red nucleus: origins of spinal and olivary projections and terminations of cortical inputs, *J Comp Neurol*", *J. Comp. Neurol.* **423**, (2000) 179-196.
- [48] A. Levinsson, H. Holmberg, J. Broman, M. Zhang, and J. Schouenborg, "Spinal sensorimotor transformation: relation between cutaneous somatotopy and a reflex network", *J. Neurosci.* **22**, (2002) 8170-8182.

- [49] V. Shaw, and J. Mitrofanis, "Anatomical evidence for somatotopic maps in the zona incerta of rats", *Anat Embryol Berl* **206**, (2002) 119-130.
- [50] K.C. Catania, and J.H. Kaas, "Organization of somatosensory cortex and distribution of corticospinal neurons in the eastern mole (*Scalopus aquaticus*)", *J Comp Neurol* **378**, (1997) 337-353.
- [51] D.D. Rasmusson, and S.A. Northgrave, "Reorganization of the raccoon cuneate nucleus after peripheral denervation", *J Neurophysiol* **78**, (1997) 2924-2936.
- [52] M. Tatagiba, B. C. and M.E. Schwab, "Regeneration of injured axons in the adult mammalian central nervous system", *Neurosurgery* **40**, (1997) 541-547.
- [53] Y. Saruhashi, W. Young, and R. Perkins, "The recovery of 5-HT immunoreactivity in lumbosacral spinal cord and locomotor function after thoracic hemisection", *Exp Neurol* **139**, (1996) 203-213.
- [54] M. Thallmair, G.A.S. Metz, W.J.Z. Z'Graggen, O. Raineteau, G.L. Kartje, and M.E. Schwab, "Neurite growth inhibitors restrict plasticity and functional recovery following corticospinal tract lesions", *Nature Neurosci.* **1**, (1998) 124-131.
- [55] S.J. Butt, R.M. Harris-Warrick, and O. Kiehn, "Firing properties of identified interneuron populations in the mammalian hindlimb central pattern generator", *J Neurosci* **22**, (2002) 9961-9971.
- [56] H. Nishimaru, and N. Kudo, "Formation of the central pattern generator for locomotion in the rat and mouse", *Brain Res. Bull.* **53**, (2000) 661-669.
- [57] M.R. Dimitrijevic, Y. Gerasimenko, and M.M. Pinter, "Evidence for a spinal central pattern generator in humans", *Ann NY Acad Sci* **860**, (1998) 360-376.
- [58] R. Herman, J. He, S. D'Luzansky, W. Willis, and S. Dilli, "Spinal cord stimulation facilitates functional walking in a chronic, incomplete spinal cord injury", *Spinal Cord* **40**, (2002) 65-68.
- [59] C.W. Wu, N.P. Bichot, and J.H. Kaas, "Converging evidence from microstimulation, architecture, and connections for multiple motor areas in the frontal and cingulate cortex of prosimian primates", *J Comp Neurol* **423**, (2000) 140-177.
- [60] C. Rivero-Melian, "Organization of hindlimb nerve projections to the rat spinal cord: a choleragenoid horseradish peroxidase study", *J Comp Neurol* **364**, (1996) 651-663.
- [61] D.N. Loy, J.F. Talbott, S.M. Onifer, M.D. Mills, D.A. Burke, J.B. Dennison, L.C. Fajardo, D.S. Magnuson, and S.R. Whittemore, "Both dorsal and ventral spinal cord pathways contribute to overground locomotion in the adult rat", *Exp Neurol* **177**, (2002) 575-580.
- [62] S.W. You, B.Y. Chen, H.L. Liu, B. Lang, J.L. Xia, X.Y. Jiao, and G. Ju, "Spontaneous recovery of locomotion induced by remaining fibers after spinal cord transection in adult rats", *Restor Neurol Neurosci* **21**, (2003) 39-45.
- [63] I.Q. Whishaw, and G.A. Metz, "Absence of impairments or recovery mediated by the uncrossed pyramidal tract in the rat versus enduring deficits produced by the crossed pyramidal tract", *Behav Brain Res* **134**, (2002) 323-336.
- [64] N. Jain, S.L. Florence, and J.H. Kaas, "Reorganization of Somatosensory Cortex After Nerve and Spinal Cord Injury", *News Physiol Sci* **13**, (1998) 143-149.
- [65] S.L. Florence, and J.H. Kaas, "Large-scale reorganization at multiple levels of the somatosensory pathway follows therapeutic amputation of the hand in monkeys", *J Neurosci* **15**, (1995) 8083-8095.
- [66] N. Jain, S.L. Florence, H.X. Qi, and J.H. Kaas, "Growth of new brainstem connections in adult monkeys with massive sensory loss", *Proc Natl Acad Sci USA* **97**, (2000) 5546-5550.
- [67] C.I. Moore, C.E. Stern, C. Dunbar, S.K. Kostyk, A. Gehi, and S. Corkin, "Referred phantom sensations and cortical reorganization after spinal cord injury in humans", *Proc Natl Acad Sci USA* **97**, (2000) 14703-14708.
- [68] Q.T. Nguyen, J.R. Sanes, and J.W. Lichtman, "Pre-existing pathways promote precise projection patterns", *Nat Neurosci* **5**, (2002) 861-867.
- [69] T. Hase, S. Kawaguchi, H. Hayashi, T. Nishio, A. Mizoguchi, and T. Nakamura, "Spinal cord repair in neonatal rats: a correlation between axonal regeneration and functional recovery", *Eur J Neurosci* **15**, (2002) 969-974.

- [70] O. Raineteau, W.J. Z'Graggen, M. Thallmair, and M.E. Schwab, "Sprouting and regeneration after pyramidotomy and blockade of the myelin-associated neurite growth inhibitors NI 35/250 in adult rats", *Eur J Neurosci* **11**, (1999) 1486-1490.
- [71] O. Raineteau, K. Fouad, F.M. Bareyre, and M.E. Schwab, "Reorganization of descending motor tracts in the rat spinal cord", *Eur J Neurosci* **16**, (2002) 1761-1771.

Preprint